

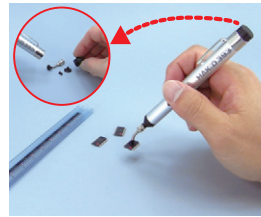
# Vacuum Pick-Up Tool

## HAKKO 393 VACUUM PICK-UP

### Dropper Type



- Portable, easy-to-carry manual dropper-type vacuum pick-up
- Maximum pick-up capacity of 40 gf
- Uses antistatic material

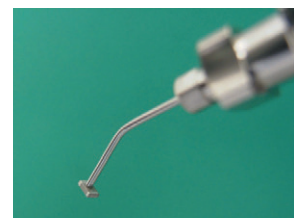


## HAKKO 394 VACUUM PICK-UP

### Battery-Powered Type



- Battery-powered suction pick-up tool with built-in vacuum pump
- Maximum pick-up capacity of 120 gf
- Uses antistatic material



### Replacement Pads and Nozzles

Part No.	Name	Specifications
A1164	Bent nozzle	0.4 mm
A1165	Bent nozzle	1.1 mm with stopper
A1198	Bent nozzle	0.26 mm
A1486	Straight nozzle	1.1 mm with stopper
A1166	Pad	3 mm
A1312	Pad	5 mm
A1167	Pad	7 mm
A1311	Pad	10 mm

### Packing List

393	Unit, 1.1 mm diameter Bent nozzle with stopper, 3 mm diameter Pad, 7 mm diameter Pad, 10 mm diameter Pad, Instruction manual
394	Unit, 1.1 mm diameter Bent nozzle with stopper, 5 mm diameter Pad, 10 mm diameter Pad, two AAA Alkaline batteries (for trial), Instruction manual

### Specifications

Model No.	393
Pad	Conductive silicone rubber
Dimensions	ø13 mm × 132 mm
Weight*	19.2 g
* Without nozzle and pad	
Model No.	394
Power supply	Two AAA batteries
Pad	Conductive silicone rubber
Battery life	Approx. 30,000 suctions (with alkaline batteries)
Suction capacity	120 gf (with a pad diameter of 10 mm)
Dimensions	130 (W) × 29 (H) × 22 (D) mm
Weight*	43 g

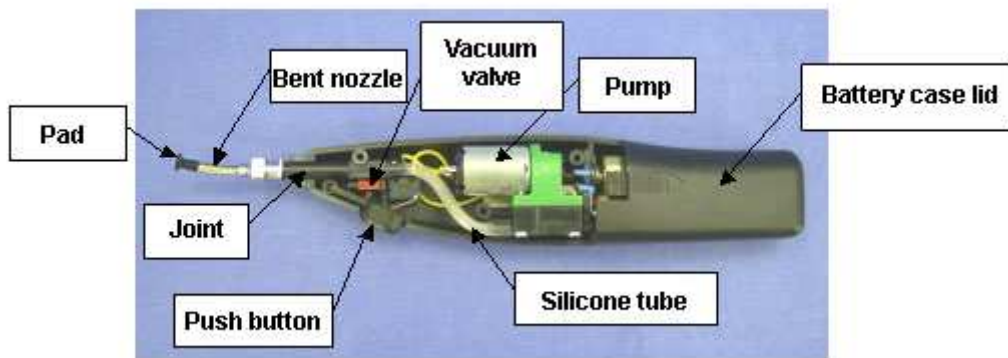
\* Without batteries, nozzle and pad

## [HAKKO 392/394 Maintenance Method TOP](#)

Maintenance method	<a href="#">HAKKO 392 Vacuum pick-up tool, Pump type</a>
(Names of parts & overhaul procedure)	HAKKO 394 Cordless vacuum pick-up tool (battery type)

### HAKKO 394 Names of Parts & Overhaul Procedure

## Names of Parts



## Overhaul procedure

**If the battery is running low, the suction force will decrease.**

Replace the batteries with new ones and then check that the suction force is sufficient. If the suction force is not recovered even after replacement of batteries, overhaul the unit according to the following procedures.

### 1. Remove the bent nozzle and pad. (Refer to Photo 1.)

Photo 1



### 2. Check the hose and pad for cracks, breaks, etc.

- If a crack, break, etc. are observed in the pad: Replace the pad with a new one.

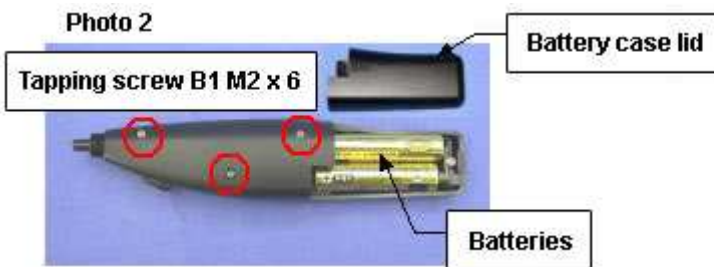
[HAKKO 394 Replacement Parts](#)



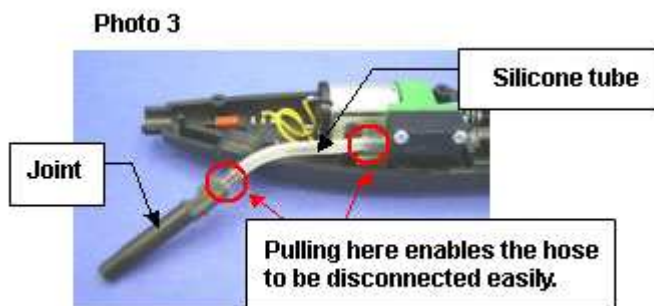
Bend the pad down slightly to check it for cracks, breaks, etc.

[Top of page](#)

**3. Remove the battery case lid to remove the batteries and then loosen the 3 screws to open the handle. (Refer to Photo 2.)**



**4. Remove the joint and silicon tube from the pump. (Refer to Photo 3.)**

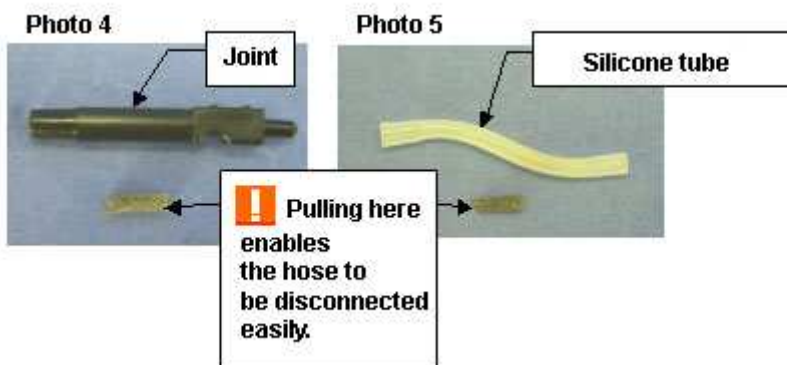


**5. Remove the filters from the silicon tube and the joint and remove dirt and dust with an air blower, etc..**

**In addition, clean the inside of the joint and silicon tube.**

- If cracks, breaks, etc. are observed in the joint or silicon tube: Replace the joint and silicon tube with new ones.

[HAKKO 394 Replacement Parts](#)



[Top of page](#)

## 6. Replace the cleaned filters into the joint and silicon tube.

Insert the filters so that they are positioned in the centers of the joint and silicon tube.  
(Refer to Photos 6, 7 and 8.)

When inserting the filter into the joint and silicon tube, be careful not to crush the filter.  
(Refer to Photos 7 and 8.)

Photo 6

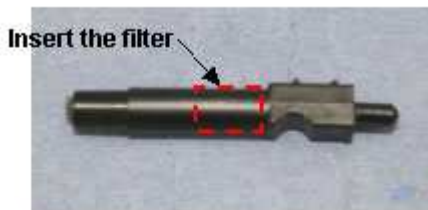


Photo 7

Condition where the filter was crushed when inserting

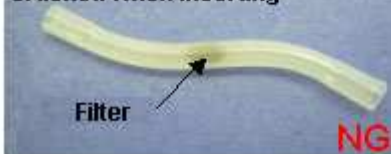
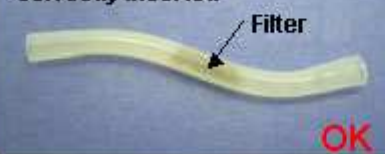
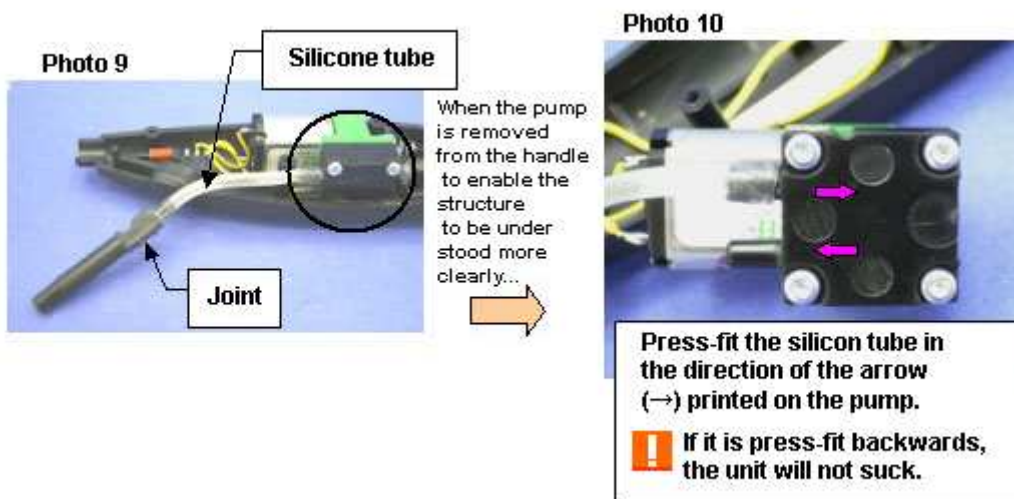


Photo 8

Condition where the filter was correctly inserted



## 7. Press-fit the silicon tube fully into the joint and pump to the end. (Refer to Photos 9 and 10.)



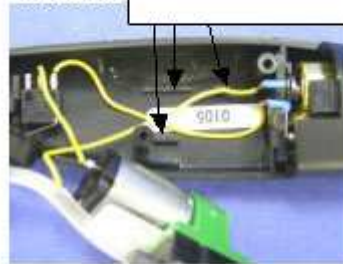
## 8. Install the joint and silicon tube into the handle. (Refer to Photos 11 and 12.)

Photo 11



Install the internal components as shown in the above photo.  
**!** Be careful not to pinch the internal lead wires between the protruding sections of the handle (Refer to Photo 11.) and the pump.

Photo 12



Protruding sections of handle

### 9. Close the handle and tighten the 3 screws. (Refer to Photo 2.)

- Install batteries in the handle and close the battery case lid.
- Attach the bent nozzle and pad. (Refer to Photo 1.)

---

If the suction force is not recovered even after overhauling, it can be assumed that the pump has deteriorated. In this case, it is recommended to send the unit in for **repair**.

#### Note



Send it to the place of purchase for repair.

**\*We recommend that you should make sure that no abnormalities are found in the wrist strap before sending it in for repair.**

**\*Clearly stipulate “repair only” or “repair and calibration” when sending it in for repair.**